

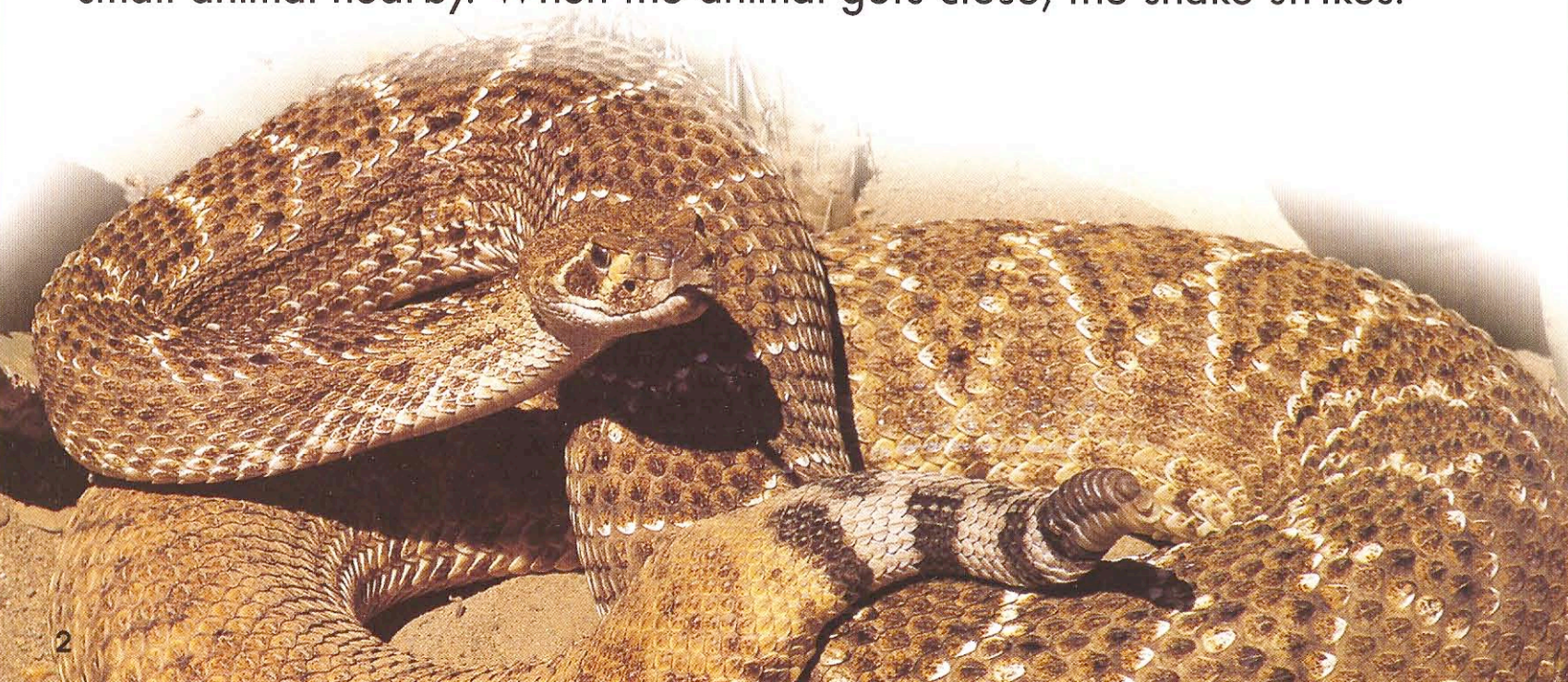
LOOK ONCE

Stay away
from this nose!



LOOK AGAIN

A snake breathes through nostrils at the front of its head. Some snakes also have small holes below the nostrils. These are heat sensing pits. This rattlesnake uses its pits to sense the warmth of a small animal nearby. When the animal gets close, the snake strikes!



LOOK ONCE

Everyone knows
this cold, wet nose!

You probably know
how it feels
on your hand or face.



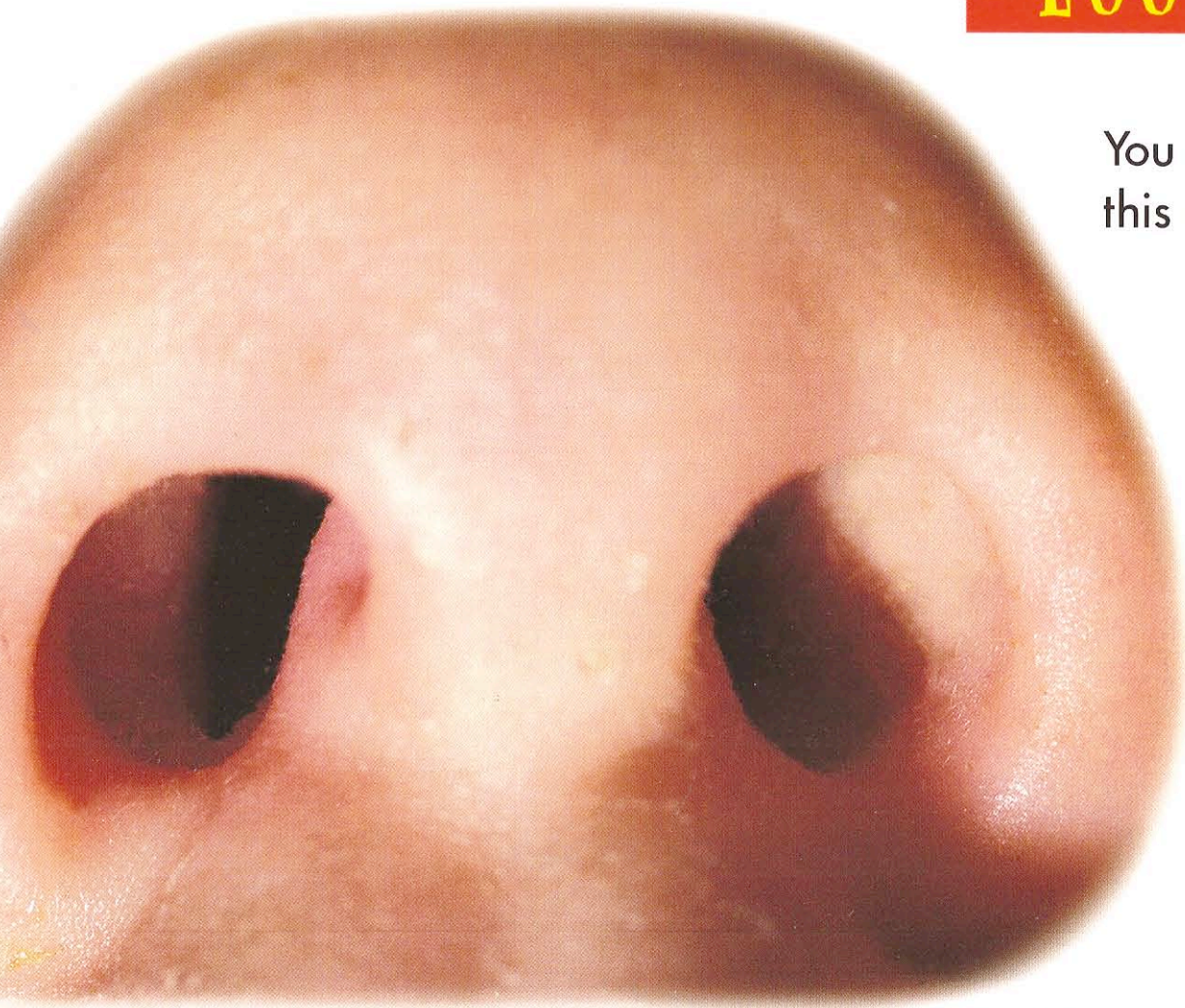
LOOK AGAIN

Dogs are great sniffers.
Their noses can find scents you can't smell.
Some dogs use their noses
to find lost people.
This mother dog uses her
nose to find her pup.



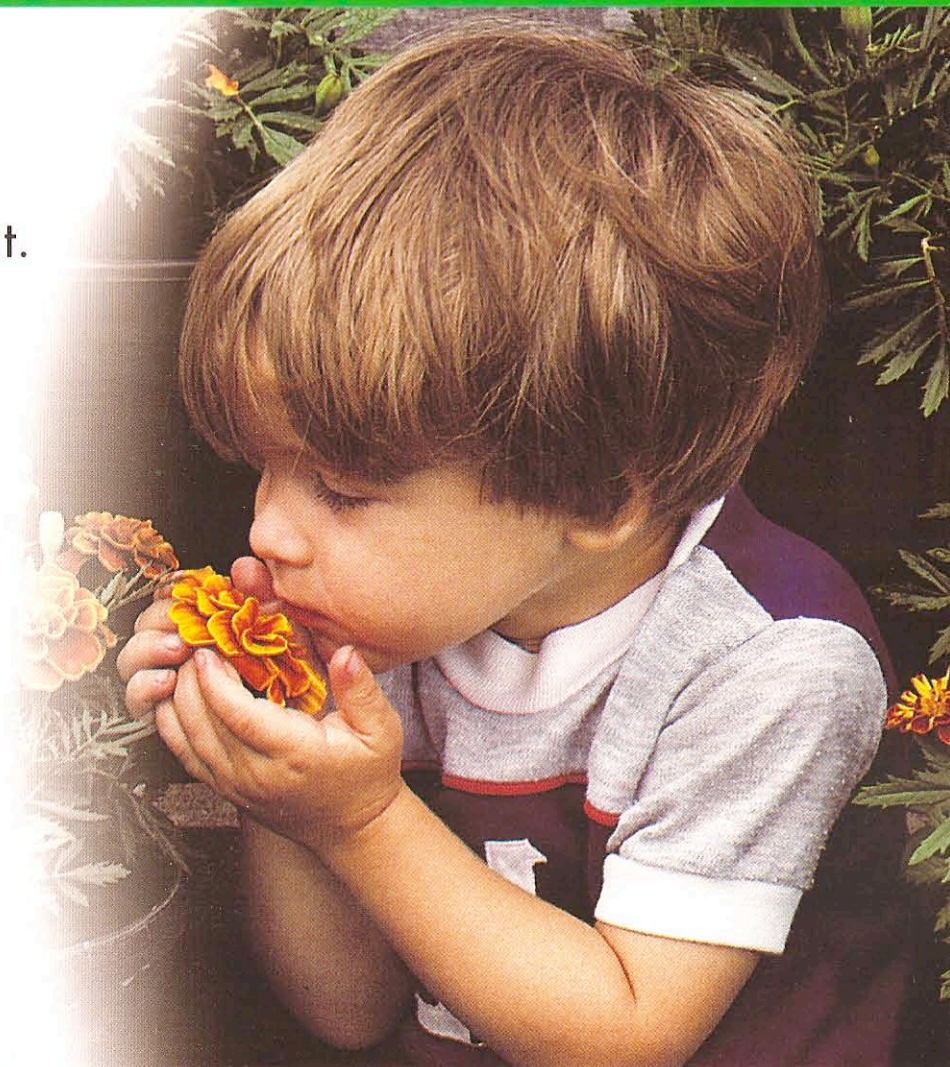
LOOK ONCE

You should know
this nose.



LOOK AGAIN

You use your nose to breathe
and to smell good things to eat.
Your nose can warn you
when there is a fire.
And you can use your nose
to smell flowers
like these marigolds.





LOOK ONCE

That's one big nose!
No wonder this insect is
called a "snout beetle."

LOOK AGAIN

A weevil has a long snout with one antenna on each side. The weevil uses its antennae to smell and feel things. It has sharp jaws at the tip of its snout. Would you like to eat with *your* nose?



LOOK ONCE

Are these giant feathers on legs?



LOOK AGAIN

No. These are the feathery antennae of a luna moth.

The moth uses its antennae like a nose. A male luna moth can smell a female that is miles away.



LOOK ONCE

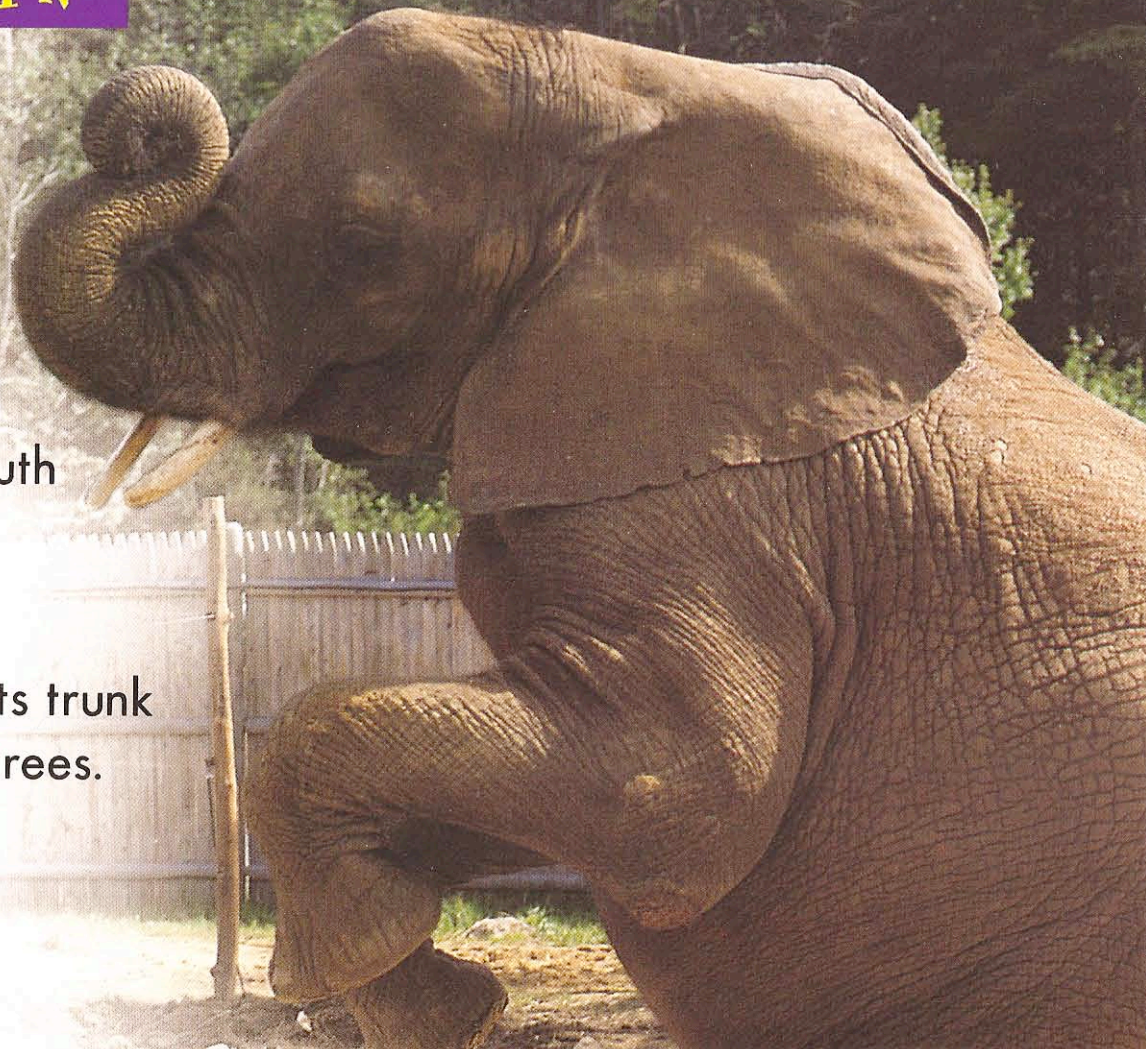
This is the longest nose of all.
It's also a "trunk"
that can bend, curl, or roll
in any direction.



LOOK AGAIN

An elephant uses its trunk to breathe and smell. With its trunk, an elephant puts food and water into its mouth or sprays water onto its back.

An elephant can use its trunk to rip branches from trees. Or to gently stroke its newborn calf.



LOOK ONCE

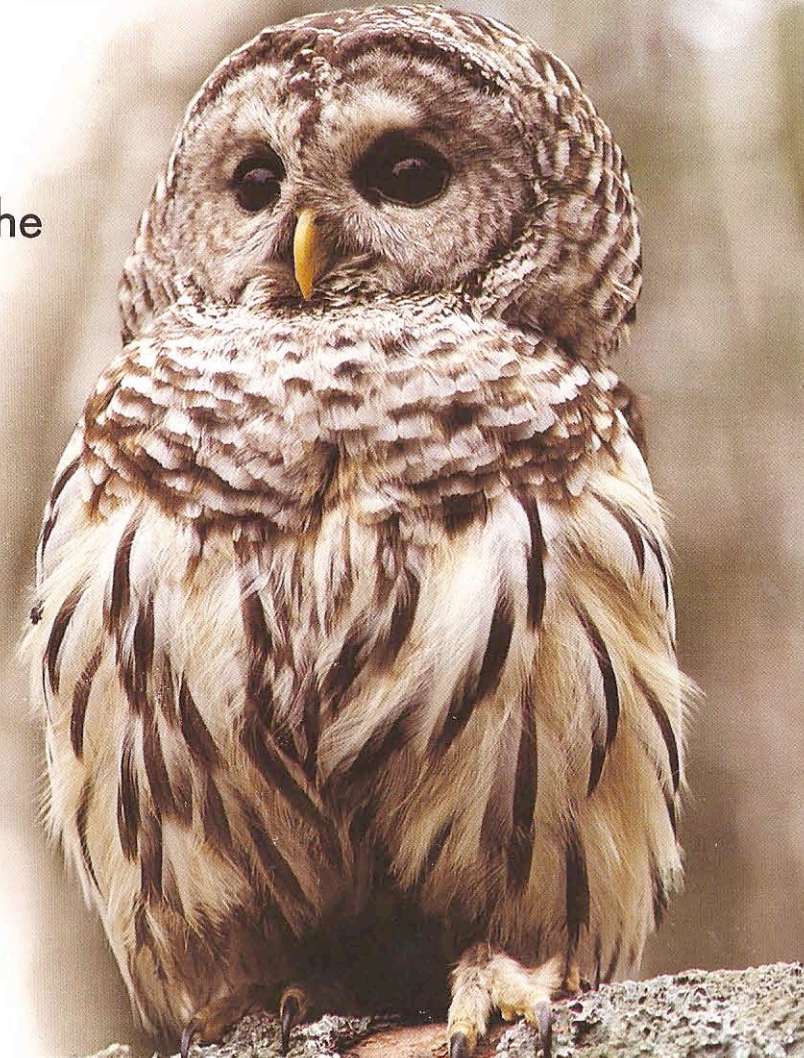


This is a beak
and also a nose.
But whose nose
could it be?

LOOK AGAIN

It's the hooked beak of a barred owl.
The two small holes near the top of the
beak are nostrils.

The owl breathes through its nostrils.
But no one knows if it can smell
with them.



LOOK ONCE



A.



B.



C.



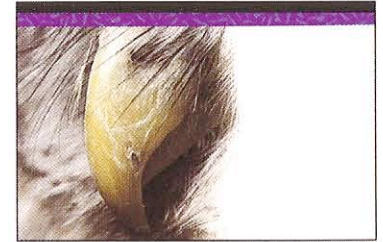
D.



E.



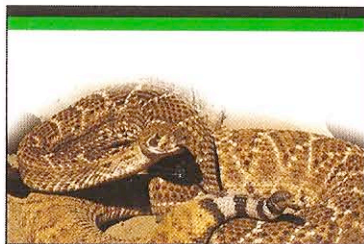
F.



G.

Look closely. Do you know whom these noses belong to?

LOOK AGAIN



A. Rattlesnake



B. Dog



C. Boy



D. Weevil



E. Luna Moth



F. Elephant



G. Barred Owl

LOOK ONCE LOOK AGAIN

CHOOSE FROM 24 TITLES IN THIS EXCITING SERIES!

EXPLORING HABITATS

- CTP 3001 At the Seashore
- CTP 3002 Underfoot
- CTP 3003 At the Pond
- CTP 3004 In the Desert
- CTP 3005 In the Meadow
- CTP 3006 In the Park
- CTP 3007 Among the Flowers
- CTP 3008 In the Garden
- CTP 3009 At the Zoo
- CTP 3010 In the Forest
- CTP 3011 In a Tree
- CTP 3012 At the Farm

EXPLORING PLANTS & ANIMALS

- CTP 3028 Animal Feet
- CTP 3029 Animal Ears
- CTP 3030 Animal Noses
- CTP 3031 Animal Tails
- CTP 3032 Animal Eyes
- CTP 3033 Animal Mouths
- CTP 3034 Animal Skin & Scales
- CTP 3035 Animal Feathers & Fur
- CTP 3036 Plant Stems & Roots
- CTP 3037 Plant Leaves
- CTP 3038 Plant Blossoms
- CTP 3039 Plant Fruits & Seeds